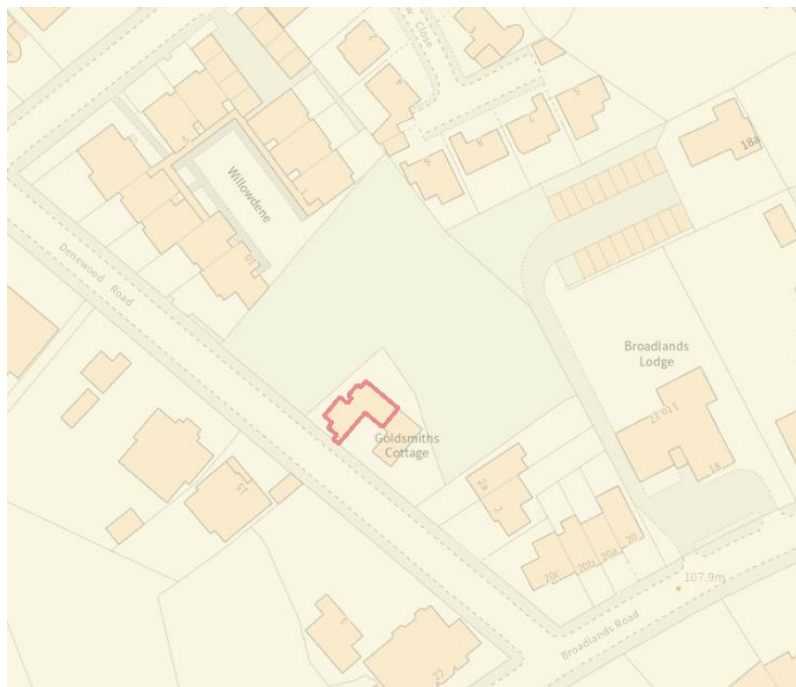


Appendix 2: Images of the site and proposed scheme

Satellite birds eye image showing the L-shaped site after demolition and clearance of the former care home.





Existing condition of the site

Yellow: Conservation Area

Red: Locally Listed Building



Aerial view looking north towards the site.



Aerial view looking east towards the site.



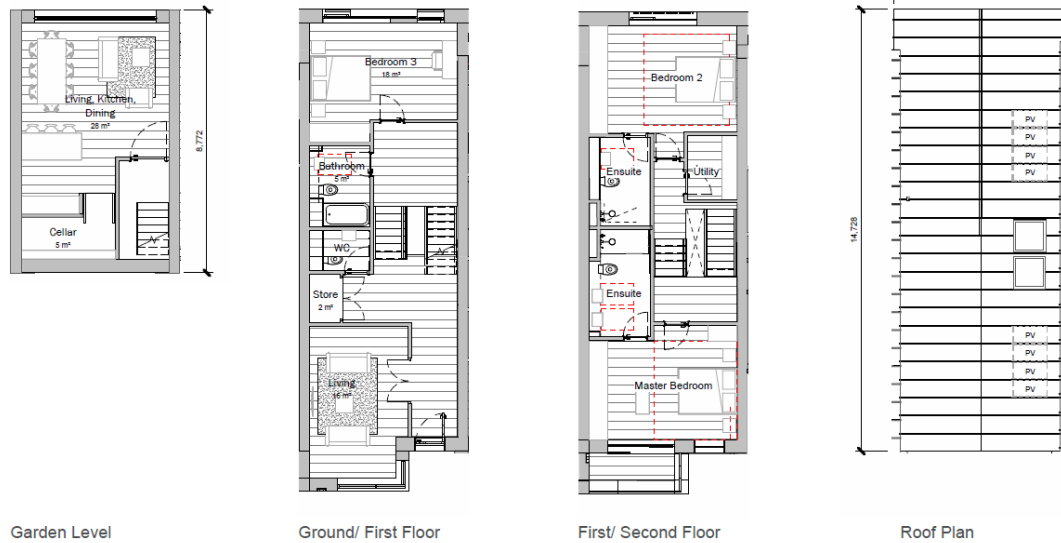
Aerial view from the north of the site looking southwards.



Proposed site plan



Proposed ground floor plan Terrace A



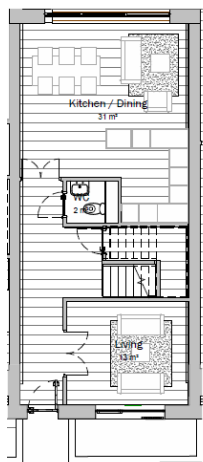
Garden Level

Ground/ First Floor

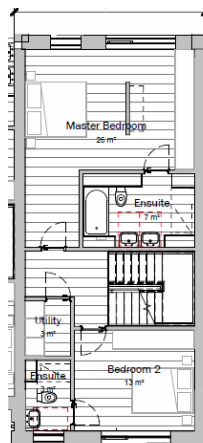
First/ Second Floor

Roof Plan

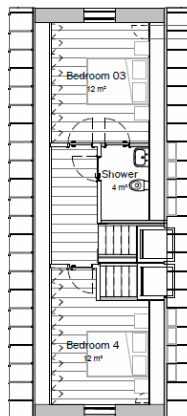
Terrace B – Mid Terrace layout



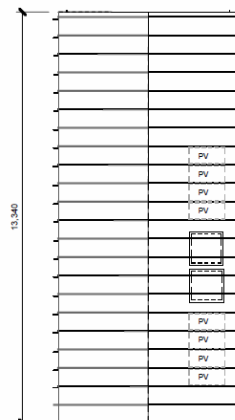
Ground Floor



First Floor



Second Floor



Roof Plan

Terrace C Standard

04 Proposed Design - Façade Treatment



A carefully selected material palette and design approach has been proposed to ensure that the development is in keeping with the character of the Highgate conservation area and to integrate with the local vernacular of the Bishops area summarised below:

- Brick façades
- Brick window heads & cills,
- Brick banding
- Feature stone window surrounds
- Black metal railings
- Subtle variations of brick colours between blocks
- Projecting dormers

Recessed downpipes and hidden gutters will be integrated to ensure the highest quality architecture is provided. Integrated solar shading has also been introduced to limit overheating and to ensure that residents have a comfortable space to live.



Terrace A - Front View



Grey Aluminium Windows with Brick Cills and Window Heads



Recessed Aluminium Downpipes - Grey



Limestone Bay Window Surrounds



Double Stack Bonded Soldier Course/Brick Banding at First Floor Level



Sliding Timber Shutters - SW Orientation



Zinc Dormer - Terrace 3



Long Format Brick - Terrace A



Long Format Brick - Terrace B



Long Format Brick - Terrace C



Zinc Roof with Hidden Gutters to Leading Edge and Central Valleys

Proposed Design – Façade Treatment



Front Elevation - House Type A - Plots 1, 2 & 3
1 : 100

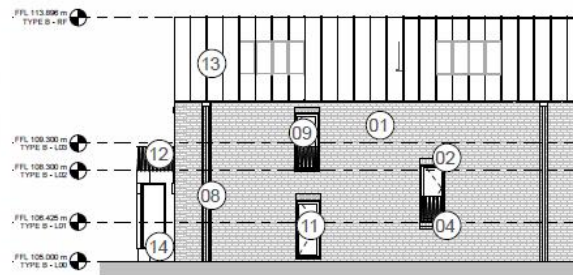


East Elevation - House Type A - Plot 1
1 : 100

Terrace A



Terrace B - Front Elevation



Terrace B - Side Elevation A



Terrace C



Terrace C - Front Elevation



Terrace C - Side Elevation A



Denewood Road street elevation





Image of front block from Denewood Road



Image of site from east of Denewood Road.



Image of site from west of Denewood Road.